

Safety, jobs, housing, education...your Commune (local council) is responsible for all these issues, that affect our everyday lives. This is why we need **responsible councillors, elected by you**, who will take care of the issues that impact our well-being in Brussels.

In Belgium, the Commune is the level of government that is closest to the citizen.

It will be important for us all to invest the time to make the right choice for our Commune. **To have your say on how your Commune is run**, all you need to do is register with your Commune to get on the electoral list and of course, **vote on 14 October 2012.**

For around **125 years**, the **Parti Socialiste** has been fighting against social inequalities and social exclusion. It is working to develop and implement policies that will benefit all citizens, regardless of their background or nationality.

Socialists will also continue to fight for the **right to vote** for all citizens.

By taking part in the communal elections in Brussels, you are exercising your right to vote in the local elections.

If you are already registered on your communal list, then you do not need to register again.

If you no longer wish to vote in Brussels, it is very easy to remove yourself from the register.

Editeur responsable : Monica GLINEUR, galerie Ravenstein 28, boîte 7, 1000 Bruxelles - Ne pas jeter sur la voie publique.



NEED MORE INFORMATION?
Fédération bruxelloise du PS
www.psbruxelles.be
02/511.10.37



**COMMUNE
MATTER TO YOU?**

Will you be voting on
14.10.2012?

Since 2000, all EU citizens have the right to vote in communal elections. Citizens can even stand and if elected, can become local councillors or even 'echevin'.

To vote, EU citizens must meet four criteria:

- Be a citizen of an EU member state
- Be at least 18 years on 14 October 2012
- Reside in Belgium and be registered with your Commune
- Register on the electoral list

HOW DO I REGISTER TO VOTE?

Registering to vote is very simple and free. Ask your Commune for a registration form. You can also download this form at www.federationbruxelloise.be

The form should be completed and returned to your Commune by 31 July 2012.

WHAT DOES YOUR COMMUNE DO?

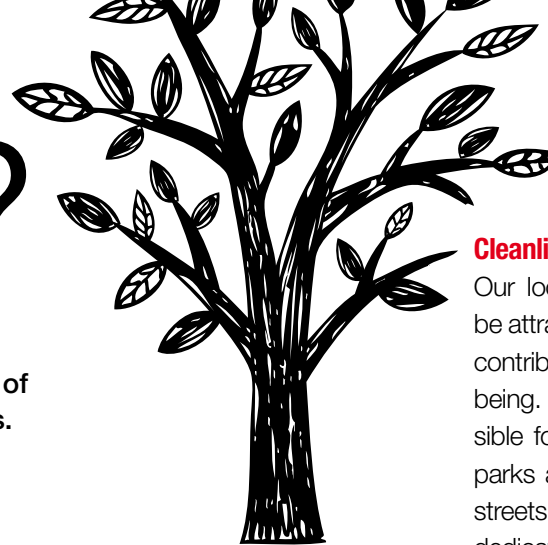
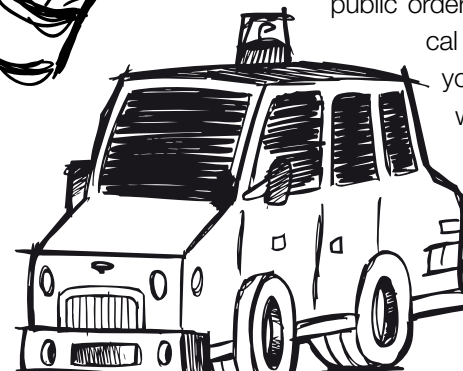
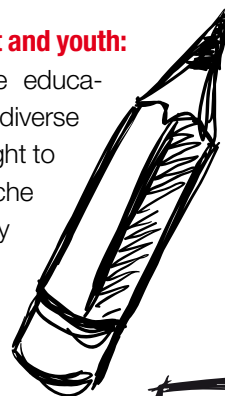
Running a Commune involves looking after the well-being of thousands of citizens from different backgrounds, all of whom have similar concerns and needs.



Housing and planning: Living in a decent and affordable home is a priority. This has been a goal for socialists for many years. Socialists plan to renovate and make available new homes for all. They are also working to make planning procedures simpler.

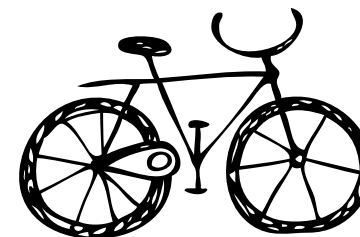
Education, childcare, culture, sport and youth:

Socialists are working to provide education for all, and to bring together diverse populations. Our priorities are to fight to ensure that there are enough crèche places available, to develop quality sporting infrastructure and to ensure cultural events are more accessible to all.



Cleanliness and green spaces:

Our local environment needs to be attractive and welcoming, as it contributes to our common well-being. Your Commune is responsible for the upkeep of the local parks and the cleanliness of our streets. Many Communes have dedicated telephone numbers and regularly organise specific rubbish collection points, to make sure that streets are kept clean.



Mobility and parking:

A number of plans have been introduced to reduce traffic. Each Commune has now established 'Villo' (bicycle-sharing) and 'Cambio' (car-sharing) pick-up points. Thanks to the introduction of parking permits for local residents, Communes have been able to develop plans which help reduce traffic.

Safety:

It is of paramount importance that all citizens can live in Brussels in total safety. Communal authorities have the responsibility to keep public order. This work is undertaken by a local team made up of local police force, youth workers and other personnel, who are responsible for the safety of our Communes.

